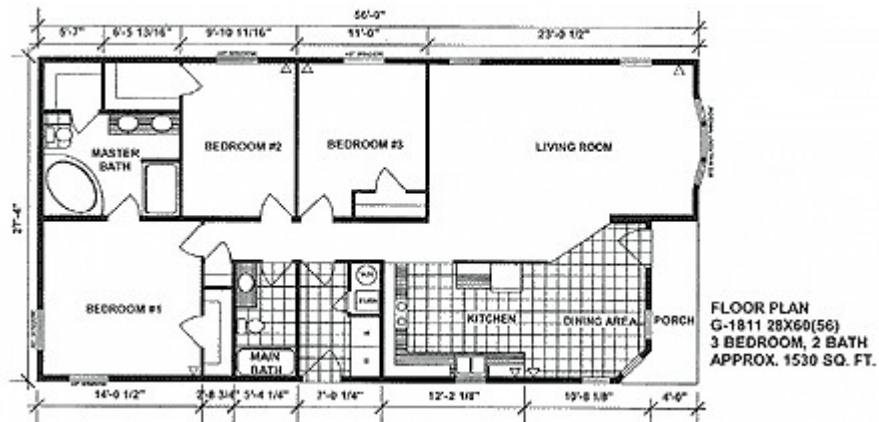


G1811 Doublewide (Multi-section) Model



This exciting home offers loads of living space (1,476 square feet in all!) with a floor plan designed to make life easy. There is a spacious living room in addition to the separate family room with solid oak fireplace surround with oak mantel.

One look into the gorgeous kitchen reveals a busy cook's dream. Loads of raised panel oak cabinets with European-style hidden hinges, beveled-edge counterpace, and quality GE appliances, including dishwasher and deluxe self cleaning electric range, make this workspace not only efficient but beautiful as well. The eat in dining area is conveniently adjacent to the family room, increasing the ease and flexibility of your entertaining style.

When entertaining or family obligations are over, and it's your time, the master suite is the place to be! Unwind in the privacy of your own full bath. Slip into the deluxe soaker tub or refresh yourself with an invigorating splash in the separate shower stall. The large bedroom area gives you plenty of room to spread out comfortably. The double closets give you ample storage for him and her.

Two additional bedrooms and a separate laundry area, ready for your washer and dryer, round out the comfort and value offered by this home.

Hundreds of options are available to give this home your own personal sense of style.

Why not stop by, phone us, or send an e-mail right now for more information or to schedule an appointment with our housing consultant.

Pine Grove Homes and Maplewood – you're almost home!

Sales Phone 207/729-5233 • Fax 207/729-2911 • Community Info 207/729-1237

